

UNITED STATES PATENT OFFICE.

JAY C. SMITH, OF KALAMAZOO, MICHIGAN, ASSIGNOR TO AMERICAN SIGN COMPANY,
OF KALAMAZOO, MICHIGAN.

SIGN.

962,724.

Specification of Letters Patent. Patented June 28, 1910.

Original application filed February 26, 1909, Serial No. 480,207. Divided and this application filed July 6, 1909. Serial No. 506,076.

To all whom it may concern:

Be it known that I, JAY C. SMITH, a citizen of the United States, residing at the city of Kalamazoo, county of Kalamazoo, State of Michigan, have invented certain new and useful Improvements in Signs, of which the following is a specification.

This invention relates to improvements in signs.

10 The main objects of this invention are: First, to provide an improved casing for electrically-illuminated signs, which is practically water-tight, and is at the same time simple and economical in structure. Sec-
15 ond, to provide an improved illuminated sign in which the lamps are conveniently accessible. Third, to provide an improved sign which is economical in its parts and in its arrangement of the parts.

20 Further objects, and objects relating to structural details, will definitely appear from the detailed description to follow.

I accomplish the object of my invention by the devices and means described in the
25 following specification.

The invention is clearly defined and pointed out in the claims.

30 A structure embodying the features of my invention is clearly illustrated in the accompanying drawing, forming a part of this specification, in which:

35 Figure 1 is a perspective view of a structure embodying the features of my invention. Fig. 2 is a vertical longitudinal section, taken on a line corresponding to line 2—2 of Fig. 1, parts being shown in full lines. Fig. 3 is a vertical transverse section, taken on a line corresponding to line 3—3 of Fig. 2.

40 In the drawings, similar reference characters refer to similar parts throughout the several views, and the sectional views are taken looking in the direction of the little arrows at the ends of the section lines.

45 Referring to the drawing, the casing in the structure illustrated consists of the side walls 1 and 2, the wall 1 being the front or face side of the casing. These side walls are preferably formed of sheet metal, as illustrated, this sheet metal being preferred.
50 The front or face wall is provided with a plurality of openings in which the lenses 8 are arranged or grouped to form the characters or symbols of the sign.

The frame of the casing preferably con-

sists of the rectangular side member 10. 55 These are preferably formed of single pieces of angle iron, the ends of which are secured together by means of the joint splice 11. (See Fig. 2). These side pieces are connected by cross pieces 12 at the top and bot- 60 tom, and end cross pieces 13. The ends 14 of the casing are provided with out-turned flanges at their edges, the side flanges being secured to the said walls. The top 15 is provided with up-turned flanges 16 at its longi- 65 tudinal edges, which are secured to the side walls, the side walls projecting beyond the frame, as clearly appears from the drawing. The ends of the top 15 overlap the flanges on the upper ends of the end wall. The top is 70 preferably provided with hand openings 17 having upwardly and outwardly turned flanges 18 at their edges. The covers 19 for these openings are provided with down- 75 wardly and inwardly turned flanges 20 on three sides or edges so that they may be slidably engaged with the flanges about the hand-hole openings. These hand-hole open- 80 ings are arranged so that the lamps in the upper part of the casing can be reached therethrough. By providing the flanges at the edges of these openings, water is excluded and the flanges also provide the securing means for the covers 19. The bot- 85 tom is preferably made up of pieces or sections 21 having hand pieces 22 at one end. The supports 23 for the bottom pieces are secured below the bottom pieces of the frame, the supports being channel-shaped to provide grooves to receive the edges of the bot- 90 tom pieces. The hand pieces at the ends of the bottom sections, being in the form of downturned flanges, serve to deflect any water that might drip thereon.

The casing is preferably supported by 95 hangers 24 arranged at each end, the hangers preferred being in the form of rods having eyes 25 at their upper end to receive the hanger arm 26. The hangers 24 are secured to the cross pieces 13 at the end of 100 the frame by means of the bolts 27 arranged through the cross piece and the end wall of the casing. See Fig. 2. On the bolts, between the walls and the hangers, are spacing members 28. This forms a simple 105 and effective means for supporting the sign and the strain is upon the frame rather than upon the sheet metal side walls.

I have not illustrated the connections for the casing parts,—that is, the rivets or bolts, and the solder connecting the walls to the frame and the walls to each other; as such connection will be readily understood.

The lamps are preferably arranged in the casing so that they are out of alinement with the lenses of the characters, and with also the border lenses with which the sign illustrated is provided. These lamps I preferably arrange in series of different colors. The lamps of each series are provided with a circuit, as 29, 30, 31 and 32. A common return circuit 33 is provided. This is found satisfactory in practice and results in a saving of considerable wiring. In each circuit I arrange means for automatically making and breaking the circuit or connection. This is preferably in the form of an electric flasher 34. The claims to these features are made in my co-pending application Serial No. 480,207, filed February 26, 1909, of which this is a division.

I have illustrated and described my invention in a form in which I have embodied the same and found to be entirely practical in use. I am, however, aware that it is capable of very great variation in structure and detail of arrangement without departing from my invention as expressed in the claims.

Having thus described my invention, what I claim as new and desire to secure by Letters Patent is:

1. In a sign, a casing comprising a frame, side walls secured to said frame to project beyond the same; end walls having out-turned flanges at their edges secured to said side walls; a top wall having up-turned flanges at its longitudinal edges secured to said side walls, a pair of oppositely arranged grooved supports arranged below said frame and within the projecting edges of said side wall and bottom pieces for said casing slidably arranged in said supports.

2. In a sign, a casing comprising a frame, opposed side walls secured to said frame, said side walls being arranged so that their edges project beyond the frame, end walls arranged between the projecting edges of said side walls, and having out-turned flanges at their edges lapped upon and se-

cured to the projecting edges of said side walls, a top wall arranged between the projecting edges of said side walls and having upturned flanges on its longitudinal edges lapped upon and secured to the projecting edges of said side walls, and a bottom removably supported between the projecting edges of said side walls.

3. In a sign, a casing comprising a frame, including a pair of rectangular side members and connecting cross-pieces therefor; side walls secured to said side members to project beyond the same; end walls having out-turned flanges at their edges secured to said side walls; and a top wall having upturned flanges at its edges secured to said side walls and arranged to overlap the flanges at the upper ends of said end walls.

4. In a sign, a casing comprising a frame, including a pair of rectangular side members and connecting cross-pieces therefor; side walls secured to said side members to project beyond the same; end-walls having out-turned flanges at their edges secured to said side walls; and a top wall having upturned flanges at its edges secured to said side walls.

5. In a sign, the combination with a pair of rectangular frames; of sheet metal walls secured thereto; cross-pieces arranged at the ends of said frames; hangers; and securing bolts therefor arranged through said cross-pieces and the end walls of the casing to engage said hangers.

6. In the structure of the class described, the combination with a casing, comprising a frame; of top, end and side walls therefor, said side walls being arranged to project below said frame; a pair of oppositely arranged grooved supports secured below said frame within said projecting side walls; and a bottom piece slidably arranged in said ways; the grooves of said supports being arranged to permit the withdrawal of said bottom piece.

In witness whereof, I have hereunto set my hand and seal in the presence of two witnesses.

JAY C. SMITH. [L. s.]

Witnesses:

CLORA E. BRADEN,
F. GERTRUDE TALLMAN.

J. O. SMITH.

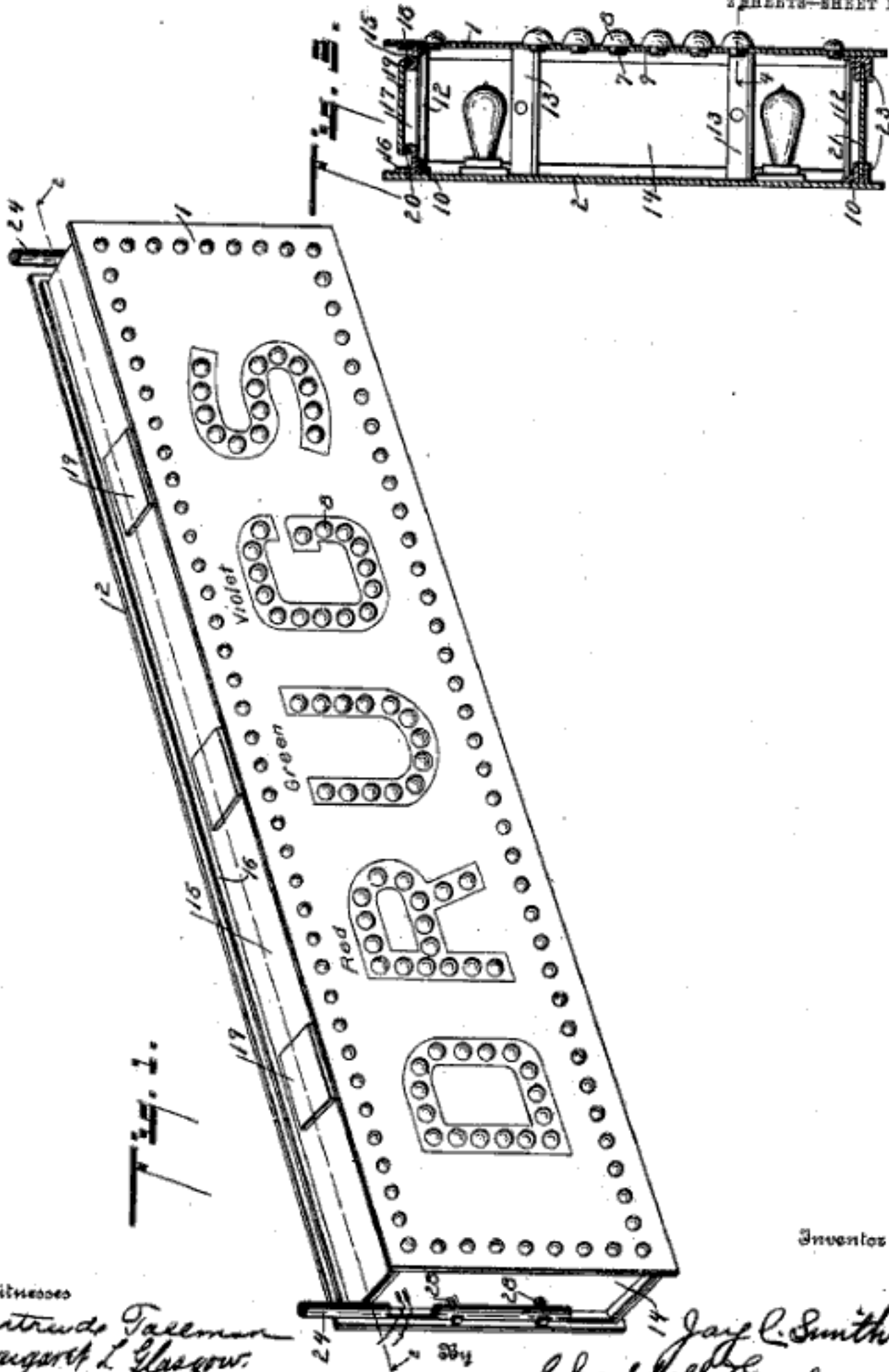
SIGN.

APPLICATION FILED JULY 6, 1909.

Patented June 28, 1910.

962,724.

2 SHEETS—SHEET 1.



Inventor

Witnesses
 Bertrude Tallman
 Margaret L. Glasgow.

Jay C. Smith
 Chappell & Co.
 Attorneys

J. C. SMITH.

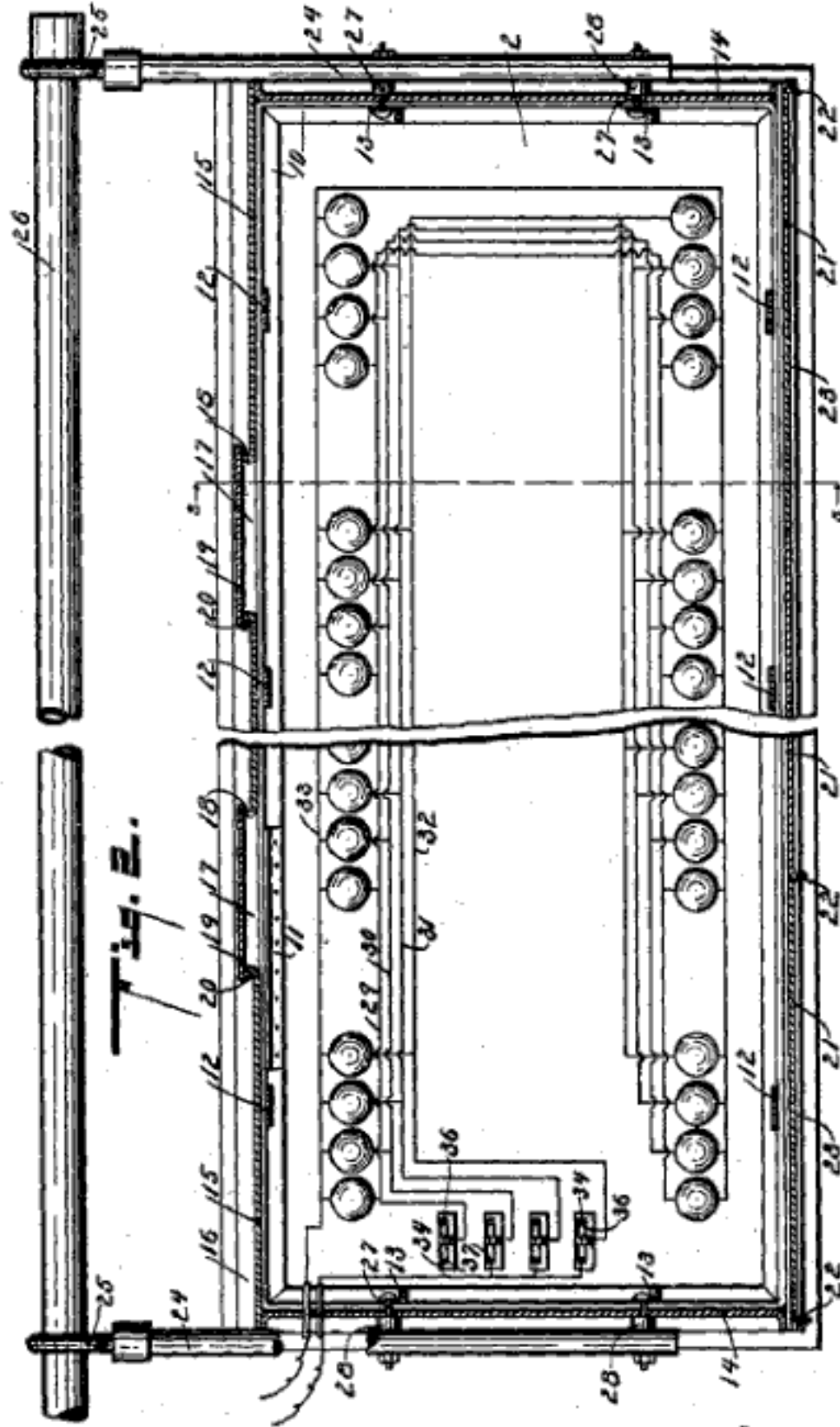
SIGN.

APPLICATION FILED JULY 6, 1909.

Patented June 28, 1910.

2 SHEETS—SHEET 2.

962,724.



Inventor

Witnesses

Gertrude Jaccman
 Margaret Glasgow

Jay C. Smith

34 Charles D. Lord

Attorney